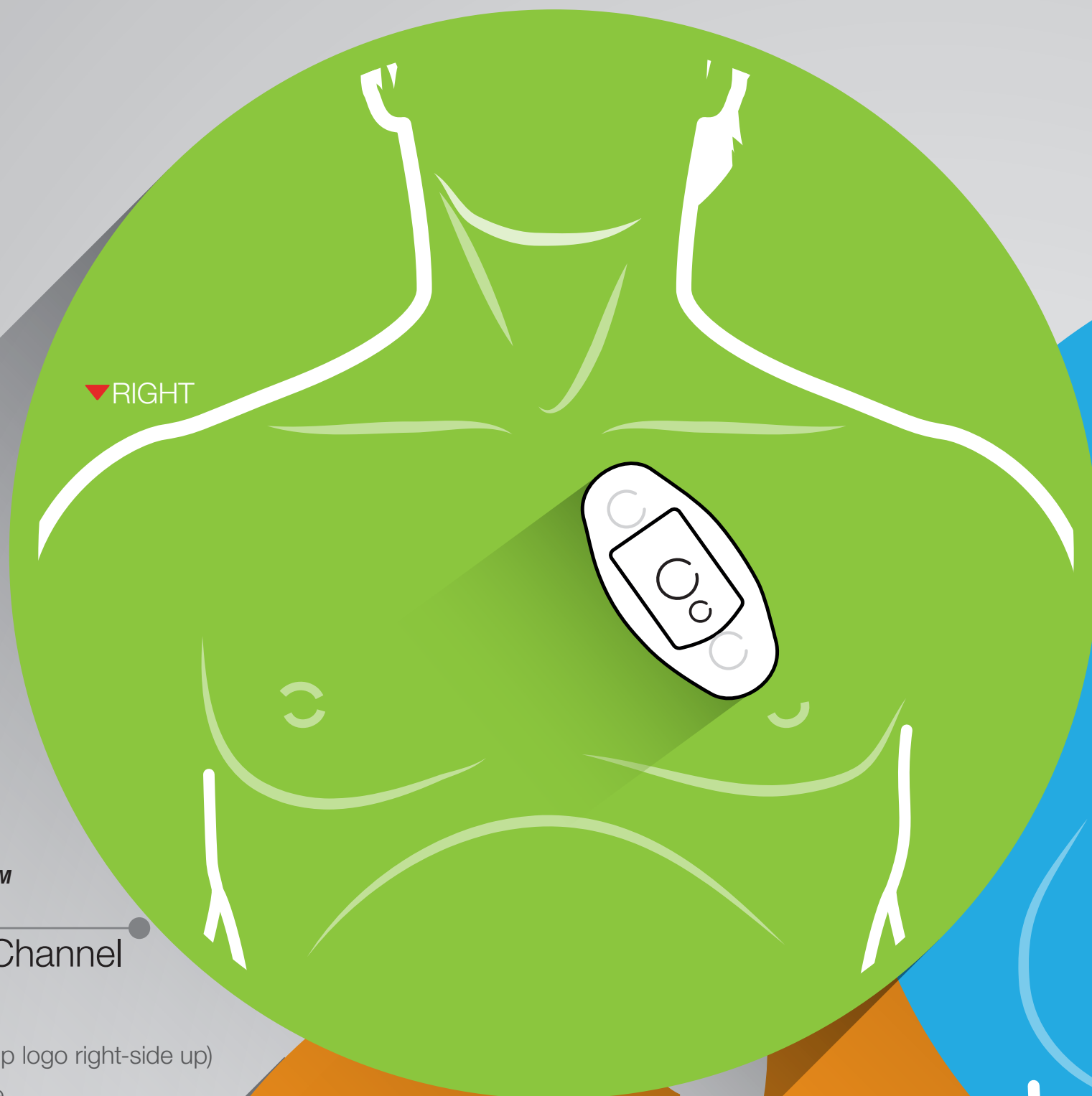


# CARDIAC MONITOR PATIENT HOOKUP

## TelePatch™

### Wireless Dual Channel

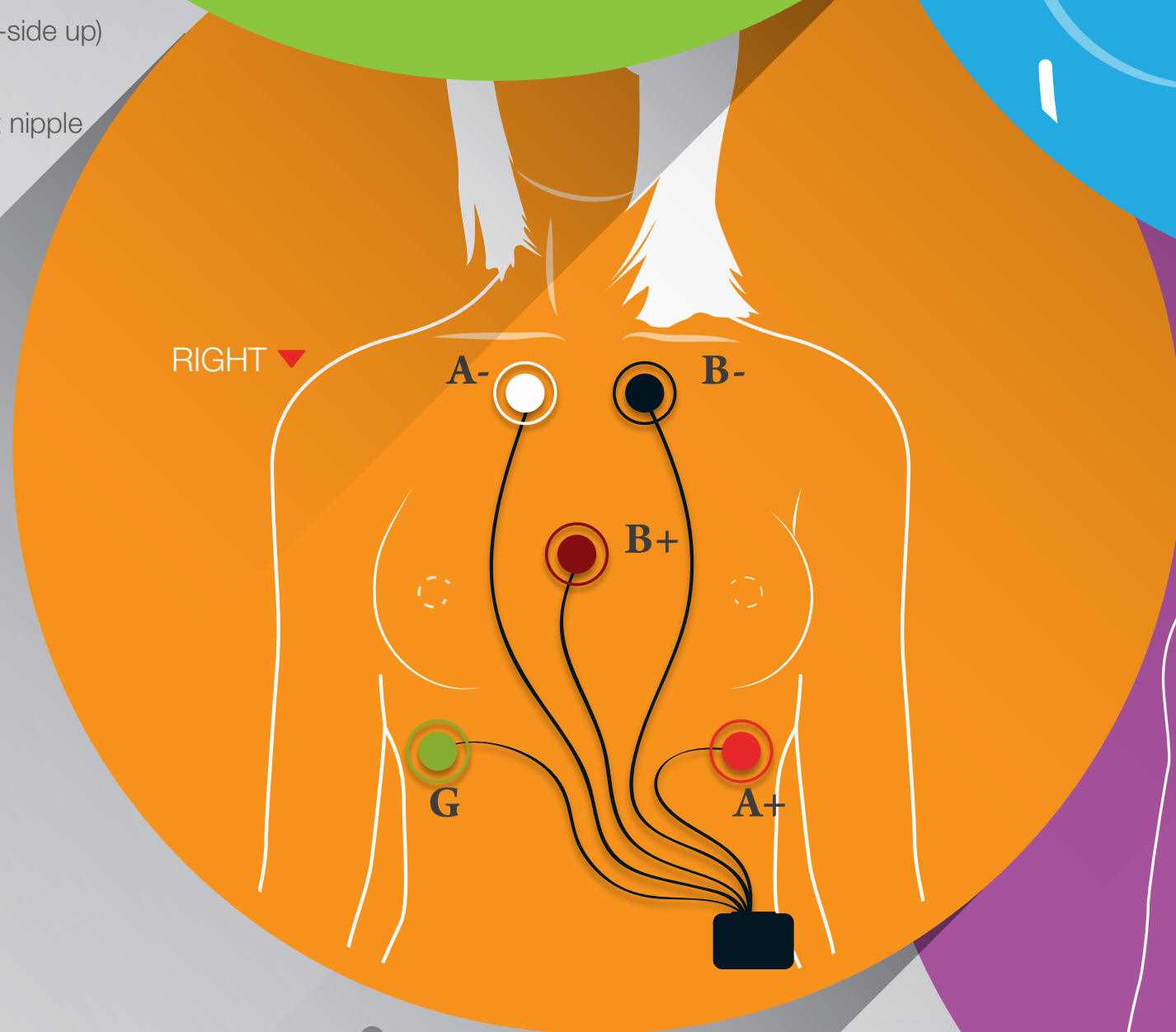
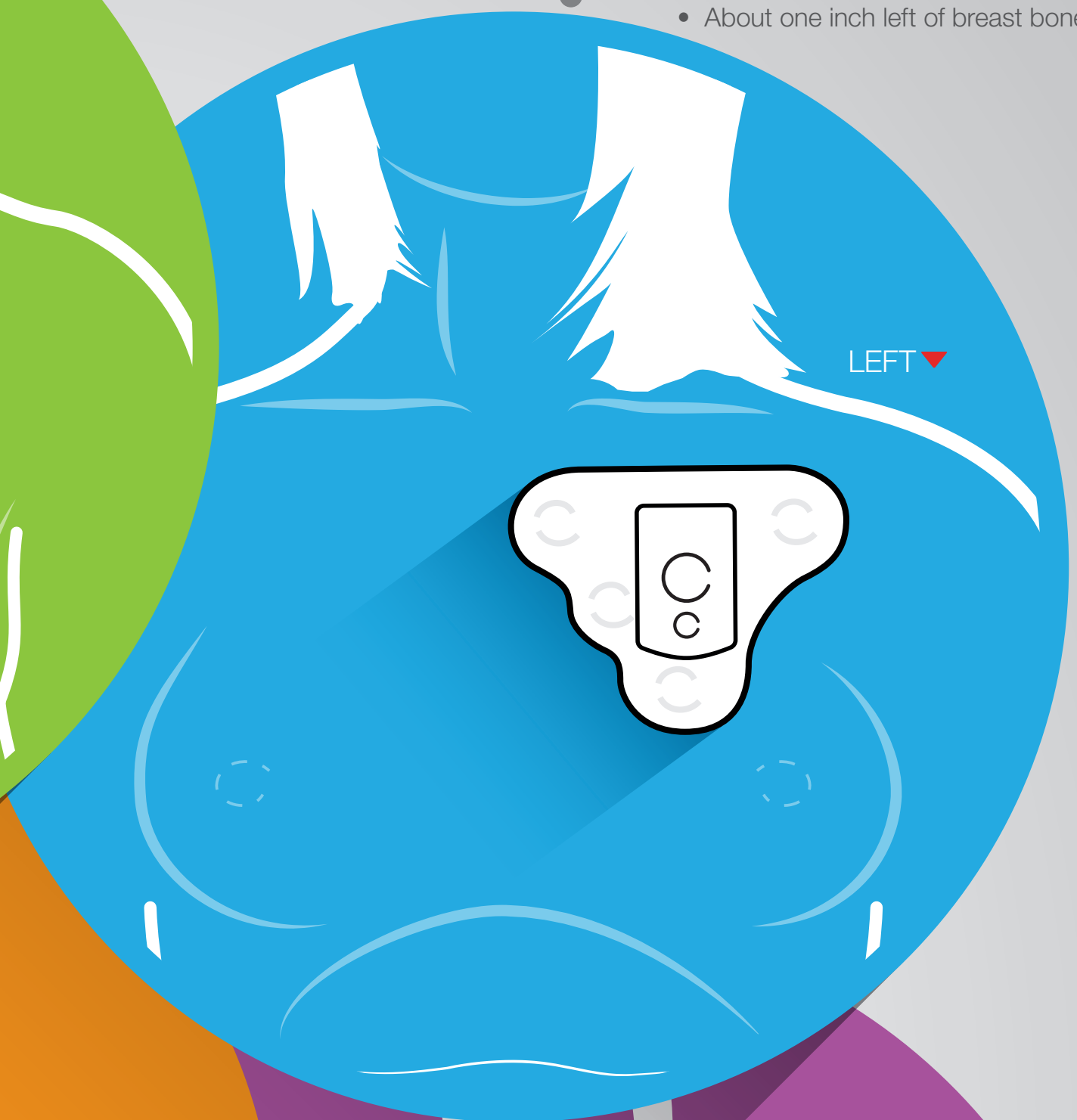
- LEFT side of chest
- Flat edge parallel to and one inch below collar bone
- About one inch left of breast bone



## TelePatch™

### Wireless Single Channel

- LEFT side of chest
- Top of patch (Medicomp logo right-side up) near top of breast bone
- Bottom of patch angled toward left nipple at a 45- to 60-degree angle



## Holter

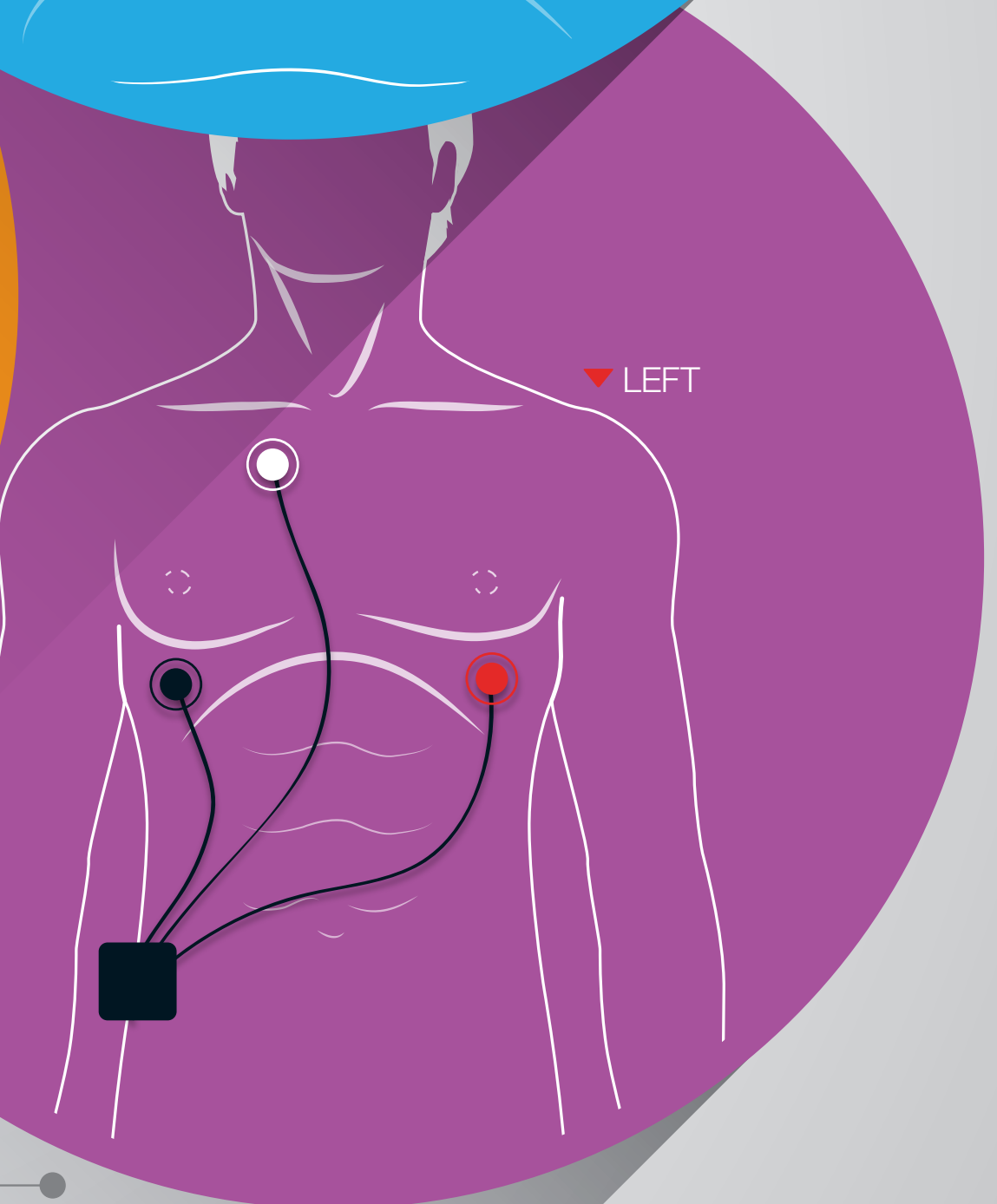
### Wired Configuration

- Place the five colored electrodes as shown in illustration
- White electrode always on upper RIGHT side of chest

## Event & MCT

### Wired Configuration

- Place the three colored electrodes as shown in illustration
- White electrode always on upper RIGHT side of chest



## TelePatch™ Wireless Configuration



Find location

Shave/Prep

Insert pendant

Peel backing

Adhere to chest

Remove Tabs

## EVENT & MCT WIRED CONFIGURATION



Find location

Shave/Prep

Snap Electrodes

Peel backing

Adhere to chest

## NEED HELP? HAVE QUESTIONS?

Call: (877) 996-5553

Email: [customersupport@medicompinc.com](mailto:customersupport@medicompinc.com)

Visit: [www.medicompinc.com](http://www.medicompinc.com)

For updated product, service and HIPAA information, please visit our website:  
[www.medicompinc.com](http://www.medicompinc.com)

## PATIENT CENTER

Videos, How-To Guides, FAQs, Troubleshooting  
[medicompinc.com/patient-center](http://medicompinc.com/patient-center).

## ARRHYTHMIA ACCESS

Your Patient Management Portal  
Visit [medicompinc.com](http://medicompinc.com) and click Arrhythmia Access Log In.

